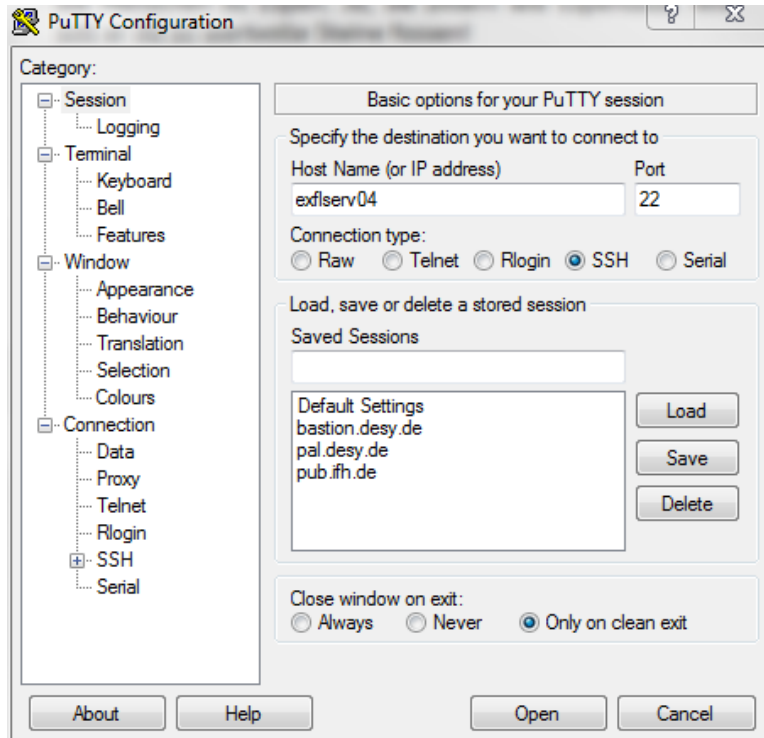
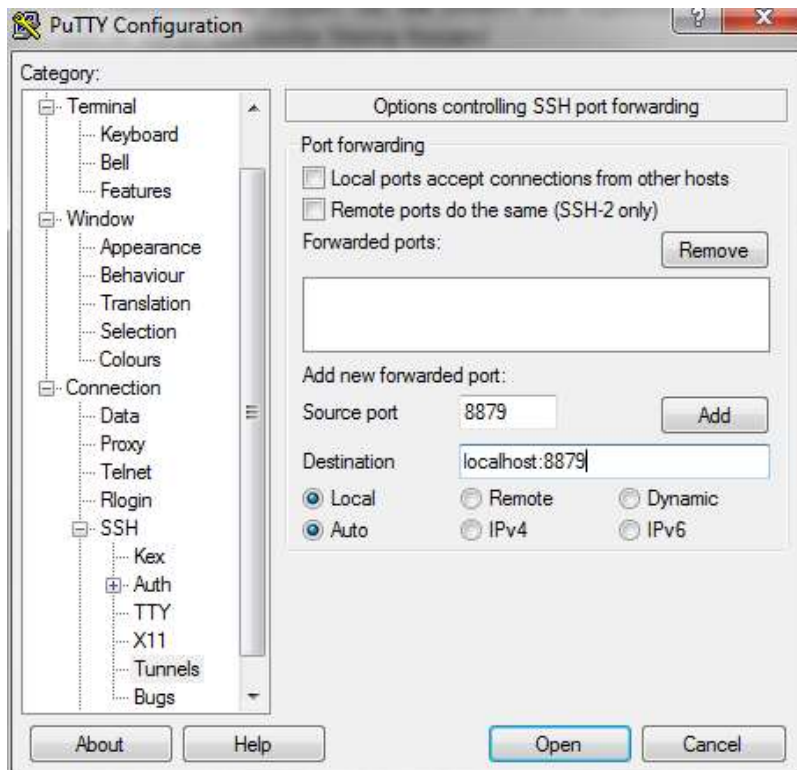


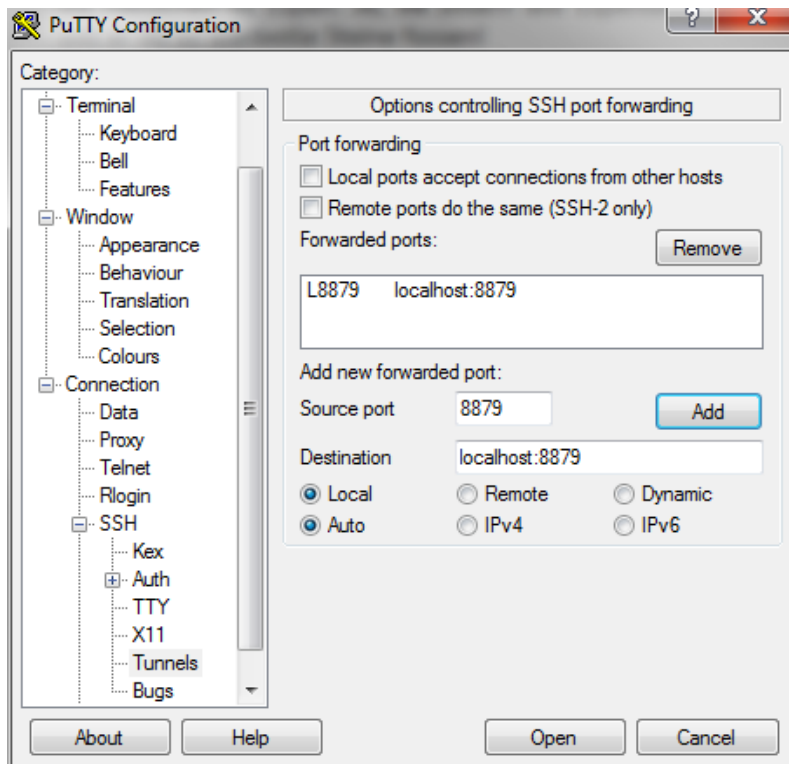
Open putty and type remote hostname:



Then on the side menu open SHH -> Tunnel, and add in Source port and Destination fields the following:



Then click Add button:



On the side menu scroll up to and click Session to get back to the main window, type in Saved Sessions the name of your session (here I put simply hostname ) and then click Save button. From now on your connection to remote host with tunnel is saved and can be reused anytime you open putty again.

